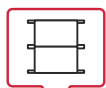
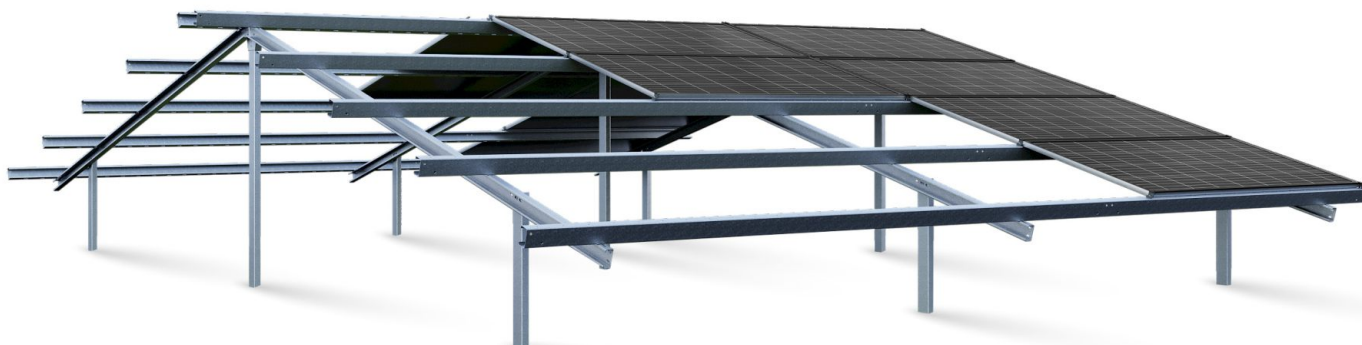




# Structure DH4WZ

Orders of 50 kW and above



**Module layout:**  
Horizontal four-row  
biplanar



**Tilt angle:**  
30°



**PV technology:**  
Every module



**Installation:**  
Fixed into the ballast

## Specifications:

<b>Material:</b>	S350 high-strength structural steel
<b>Anti-corrosion coating:</b>	Magnelis®
<b>Warranty on construction and coating:</b>	15 years
<b>Technology:</b>	Suitable for mounting any PV module
<b>Application:</b>	Farms and micro installations
<b>Structural standards:</b>	PN-EN 1990 i PN-EN 1993

## Profile:

<b>Pole:</b> C100x48mm	<b>Purlin:</b> C100x48mm
<b>Purlin:</b> C100x60mm	<b>Fasteners:</b> A2- 70
<b>Clamps:</b> Silver or black ALU EN AW- 6063	

## Additional options:

Inverter mount	Mounting to ballast (prefabricated ballasts)
Additional braces	Mounting to concrete ground
Tilt angle 25° to 35°	