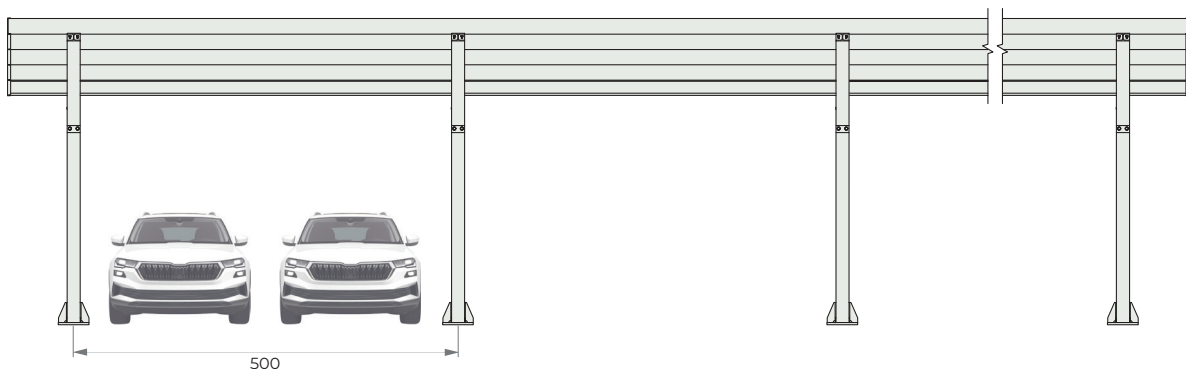
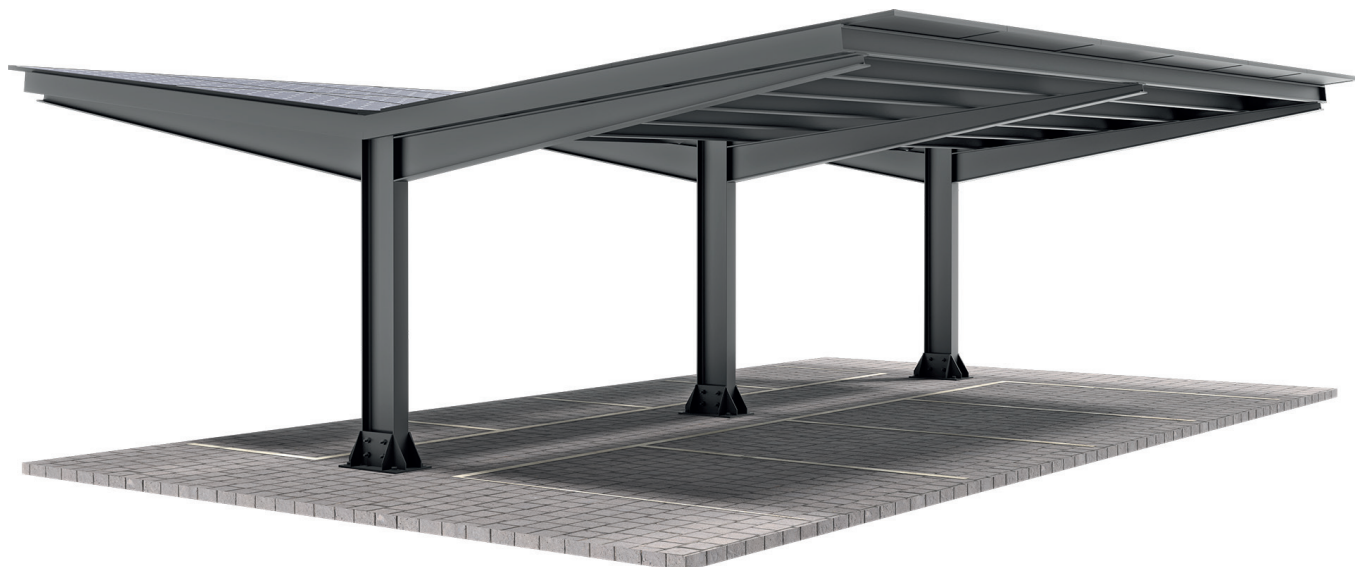
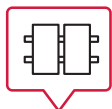




Carport **EASYPARK** TYPE Y



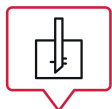
RAL color:
optional



Module layout:
vertical



Tilt angle:
10°



Foundation:
reinforced concrete or screw

Specification:

Material: S350GD and S355 structural steel with increased strength

Anti-corrosion coating: Zinc + magnelis

Warranty: 20 years

Possibility of expansion with additional stations

Adaptation of the structure to individual needs

Additional options:

▪ Prefabricated or screw foundation

▪ Sealed roof

▪ RAL color

▪ Guttering

▪ LED lighting strips

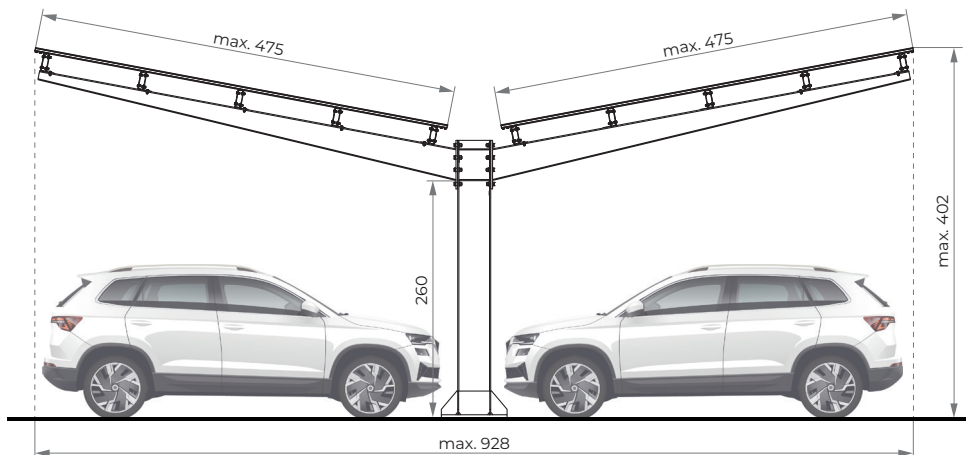
▪ Inverter mounting according to individual guidelines



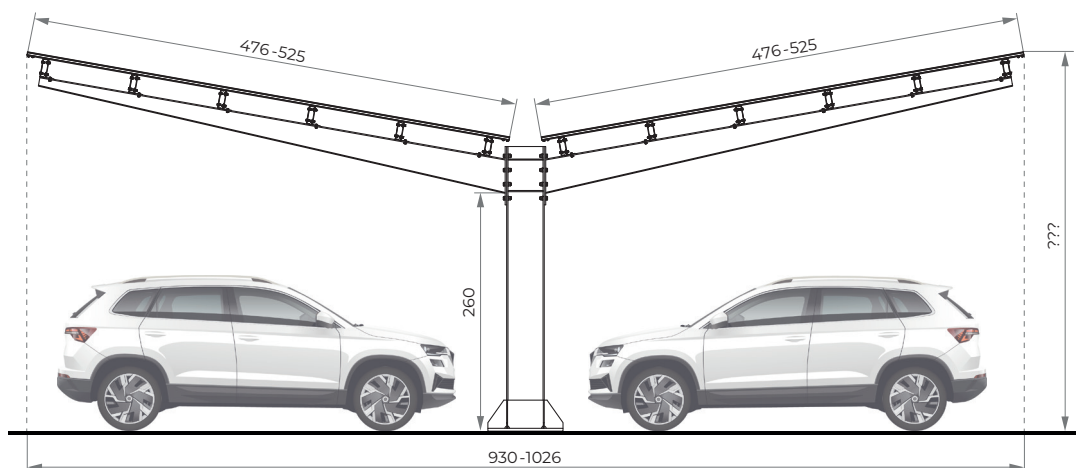
Carport **EASYPARK** TYPE Y



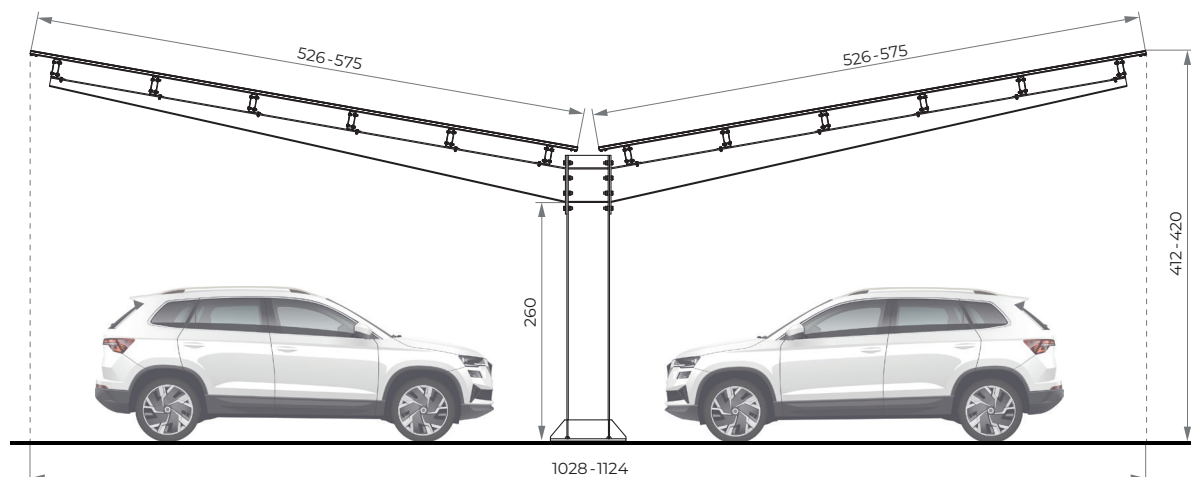
EASYPARK Y1000



EASYPARK Y1100



EASYPARK Y1200



* All dimensions in [cm]