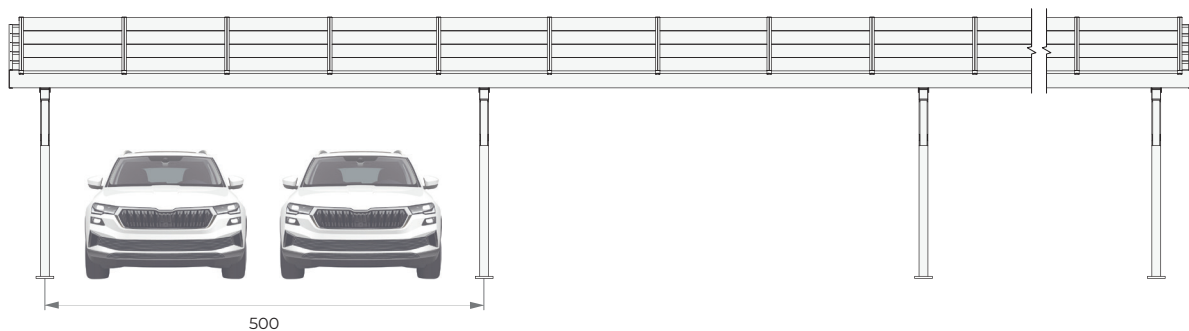
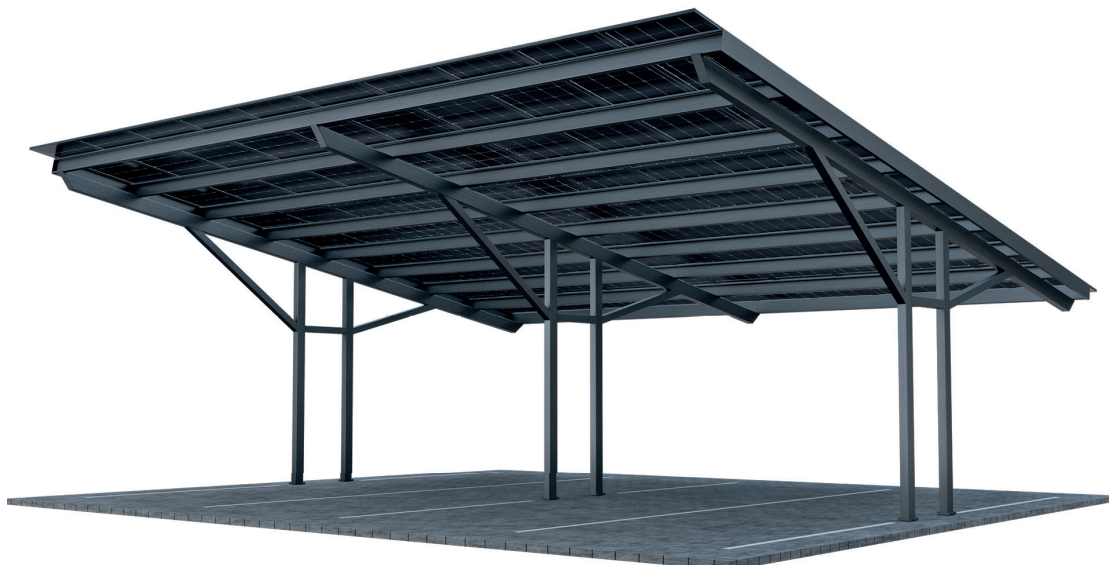
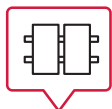




Carport **BASIC** TYPE T



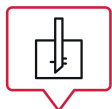
RAL color:
optional



Module layout:
vertical



Tilt angle:
10°



Foundation:
reinforced
concrete or screw

Specification:

Material:	S350GD and S355 structural steel with increased strength
Anti-corrosion coating:	Zinc-magnesium coating (Magnelis®) and galvanizing
Warranty:	20 years

Possibility of expansion with additional stations
Adaptation of the structure to individual needs

Additional options:

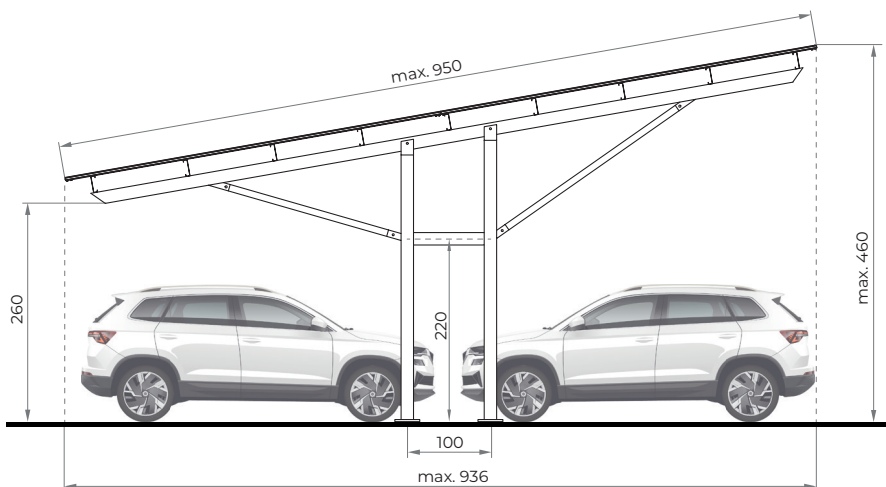
- Prefabricated or screw foundation
- Sealed roof
- RAL color
- Gutter mounting system
- LED lighting fixtures
- Inverter mounting system according to individual guidelines



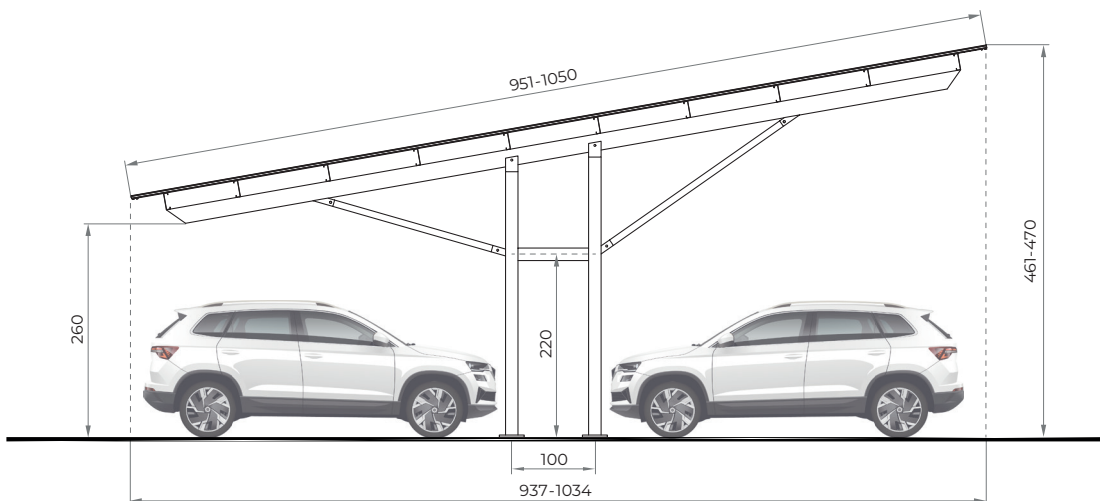
Carport **BASIC** TYPE T



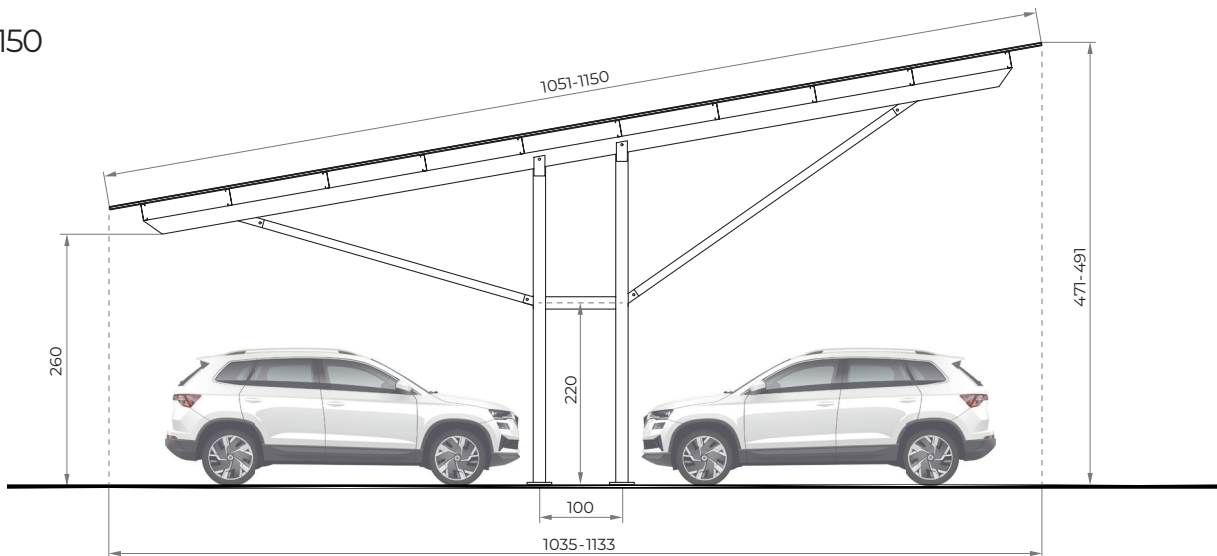
Basic T 950



Basic T 1050



Basic T 1150



* All dimensions in [cm]