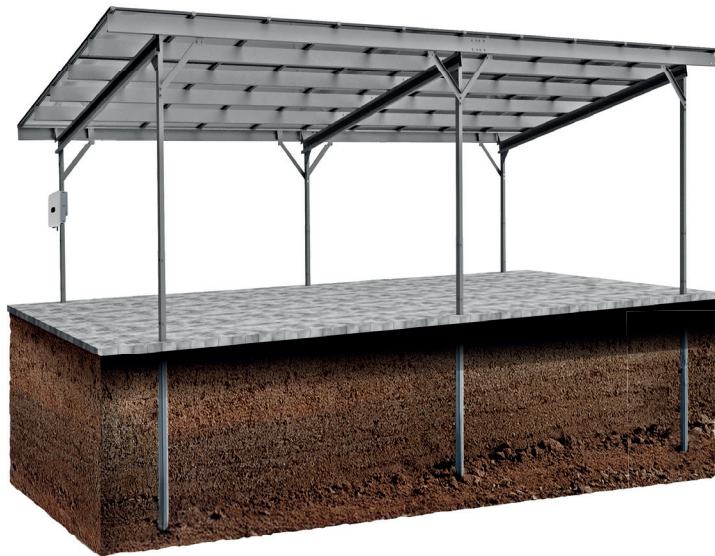
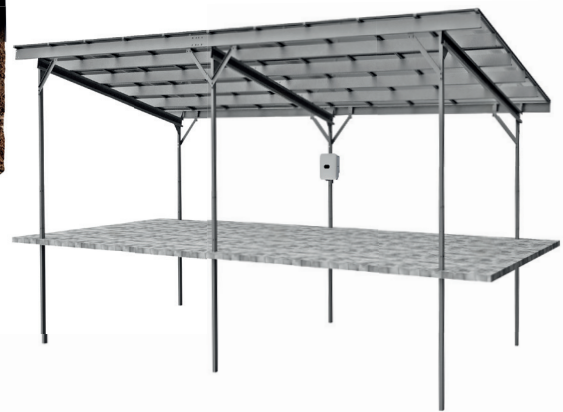




IMPACT V2



* Inverter is not part of the shed,
inverter mounting system in additional options!

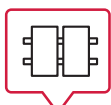


Specification:

Material:	Structural steel according to the PN-EN 10346:2015 Steel grades: S320GD, S350GD lub S390GD
Anti-corrosion coating:	Zinc-magnesium coating (Magnelis®) and zinc plating
Warranty:	20 years



Anti-corrosion coating



Module layout:
vertical



Tilt angle:
10°



Installation:
driving into the ground

Possibility of expansion with additional stations
Adaptation of the structure to individual needs

Additional options:

- Possibility of pouring concrete over the poles
- Sealed roof
- Inverter/inverter mounting system according to individual guidelines
- Gutter installation system
- LED light fixtures

IMPACT V2



IMPACT 3.0

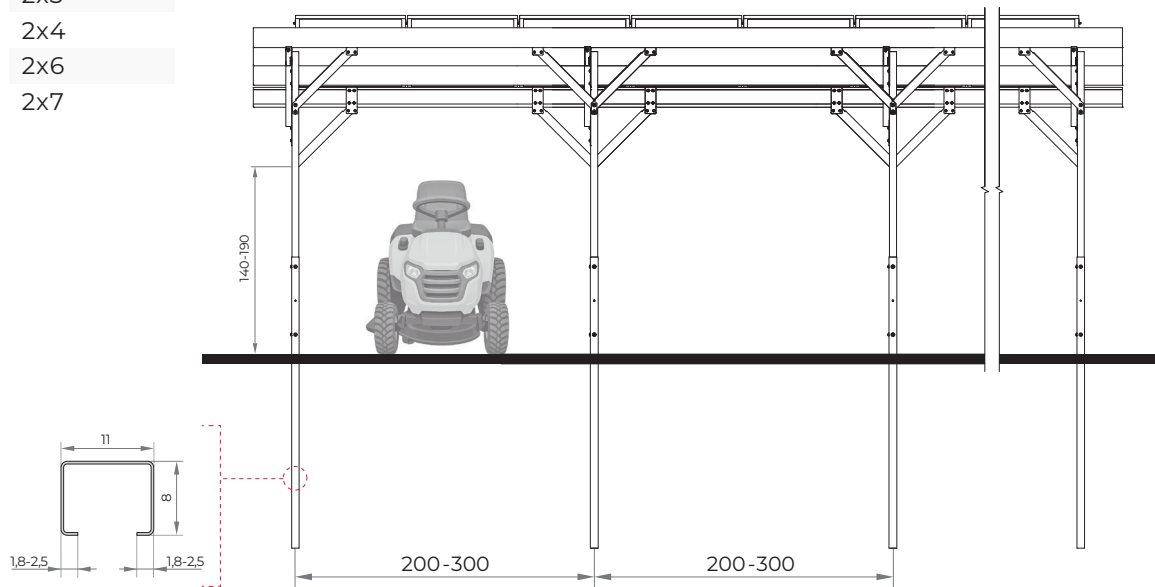
System:

2x3

2x4

2x6

2x7



IMPACT 4.0

System:

2x5

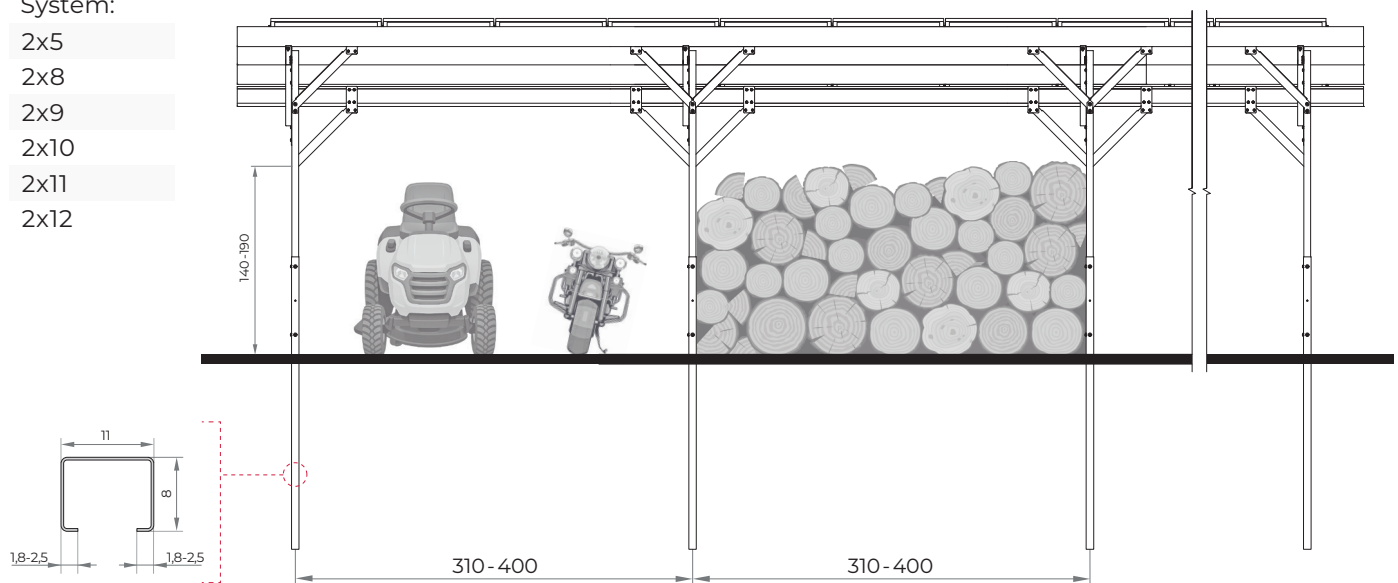
2x8

2x9

2x10

2x11

2x12



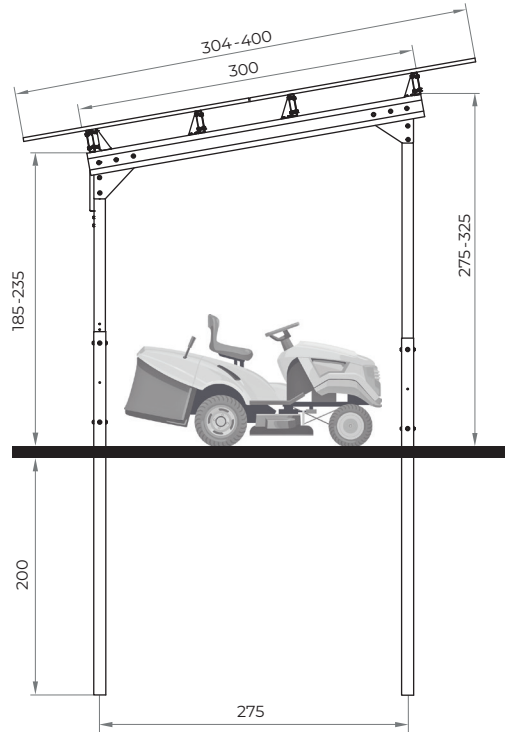
* All dimensions in [cm]

IMPACT V2



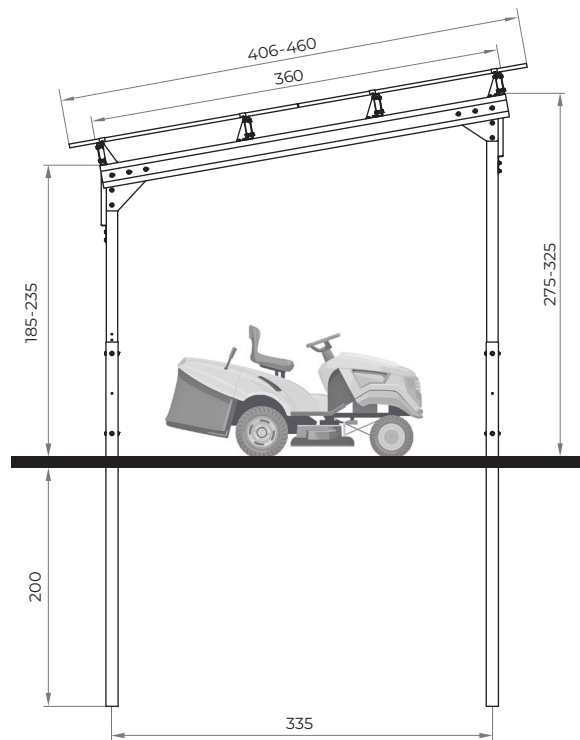
IMPACT 3.0 i 4.0

Side view
for the roof **304-400**



IMPACT 3.0 i 4.0

Side view
for the roof **406-460**



* All dimensions in [cm]