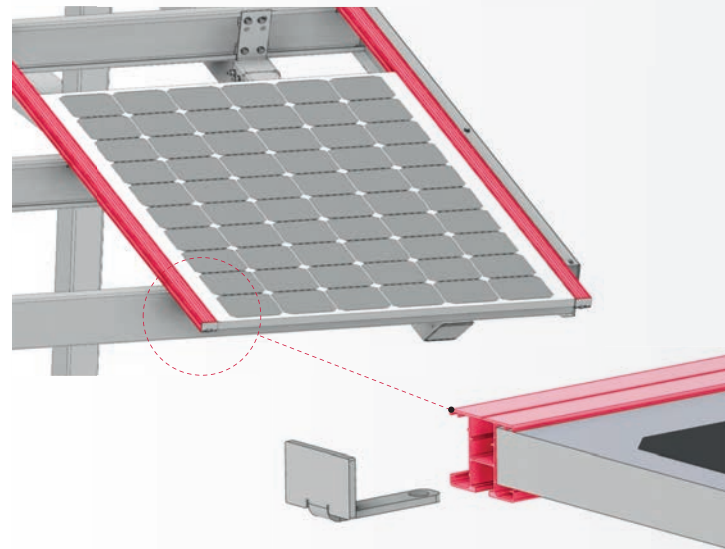
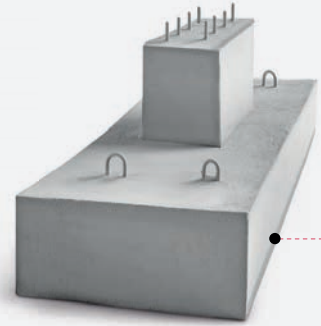
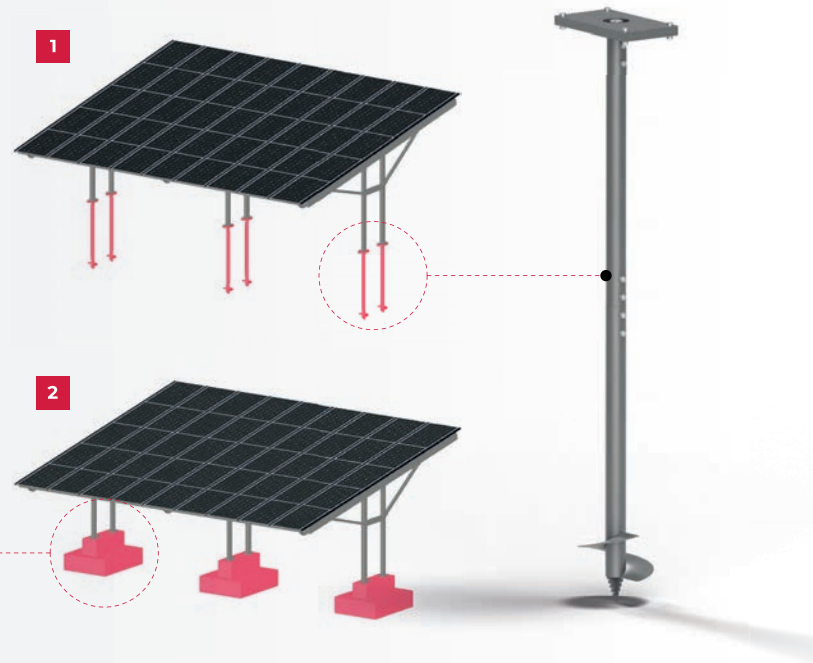




Carport installation methods

- 1. Cast / prefabricated foundations
- 2. Screw piles



Sealed roof

Structural element - aluminum mounting strip for PV panels, providing additional stabilization of purlins, reducing leakage and promoting water drainage.



The future of photovoltaic installations.



www.amiston.pl/eu

Wspólna Street 1M
45-873 Opole

Follow us on:

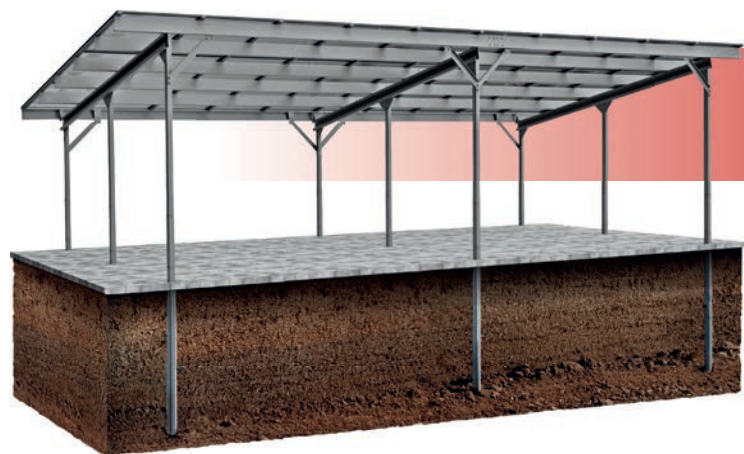


Standard Carports

Single-family homes and small businesses.



| | |
|--------------------------|---|
| Modular system | Vertical |
| Inclination angle | 10° |
| Foundations | Poured / Prefabricated foundations Screw piles |
| Warranty | 20 years |
| Inverter mounting | Additional option |
| Sealed roof | Additional option |
| RAL color | Painting in any color from the RAL palette |



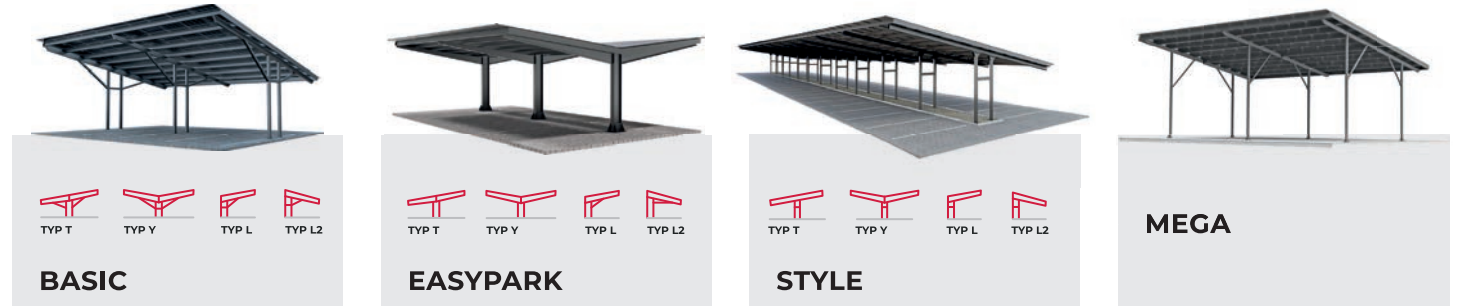
NEW in the offer! IMPACT Carport

- Installation **without the need for foundations**,
- **Very quick on-site** installation,
- **Cost optimization** while maintaining high quality workmanship.

Industrial Carports

Large commercial facilities:

- retail and recreational facilities,
- office buildings and public utility structures,
- public parking lots.



| | |
|---|-------------------------------------|
| Distance between carport frames, center to center: 5 m | |
| Height at the lowest point: 2,6 m | |
| Raising the carport to 3 m at the lowest point - additional option | |
| Material | High-strength structural steel S355 |
| Warranty | 20 years |
| Sealed roof | Additional option |
| Inclination angle | 10° (Carport MEGA 6°) |

Modular Carports by Amiston

All Amiston Carports are designed **in a modular way**, making it easy to expand them by adding additional bays and adjusting the spacing between supports.

