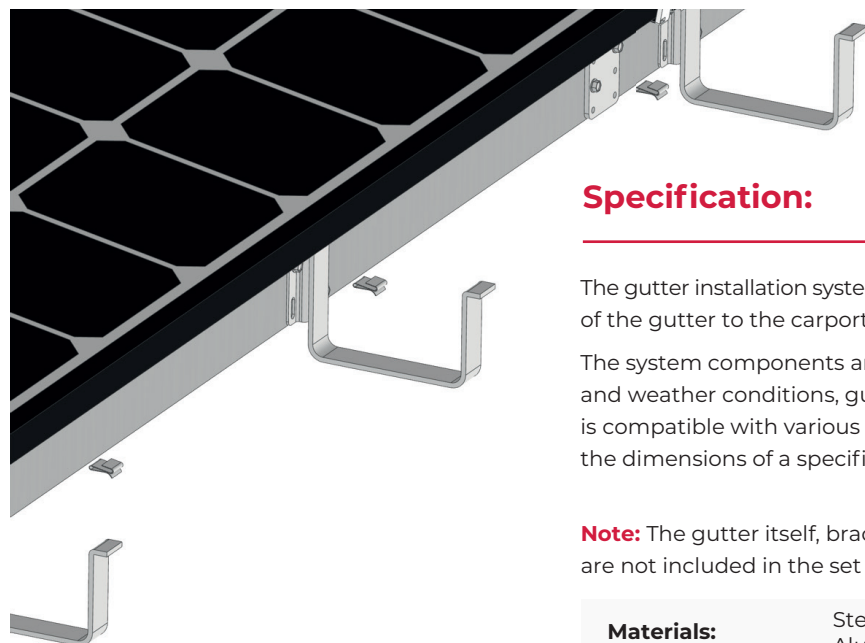




GUTTER INSTALLATION SYSTEM



Specification:

The gutter installation system is designed to enable quick and stable attachment of the gutter to the carport structure, ensuring effective drainage of rainwater.

The system components are made of durable materials resistant to corrosion and weather conditions, guaranteeing long-term durability. The structure is compatible with various types of gutters and can be easily adjusted to fit the dimensions of a specific roof.

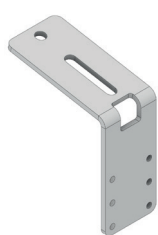
Note: The gutter itself, brackets, clamps, and the downpipe system are not included in the set – **they must be ordered separately!**

Materials:	Steel with zinc coating, Stainless steel Aluminum, Polyethylene
-------------------	--

Warranty:	20 years
------------------	----------

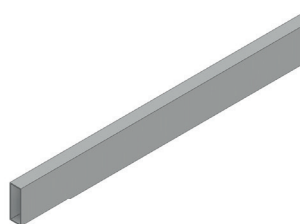
* Parts included in the set:

Steel bracket for adaptive profile



Steel with zinc coating

Aluminum adaptive profile



Aluminum

End cap for adaptive profile

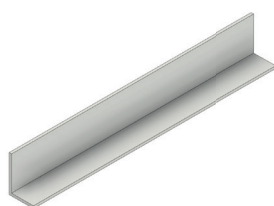


Polyethylene

Zinc paint

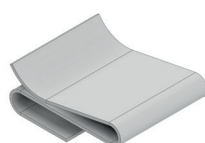


Connector for adaptive profile



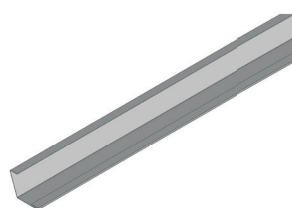
Aluminum

Drip edge clip



Stainless steel

Drip edge



Coated sheet metal